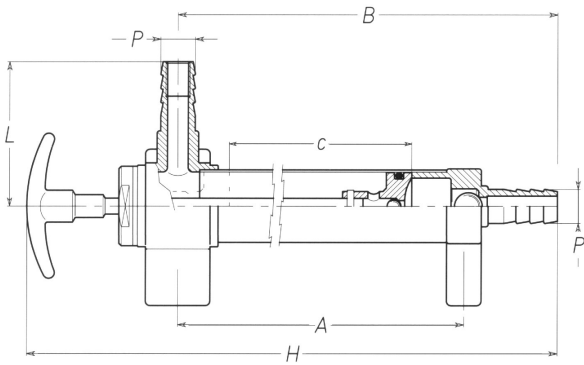
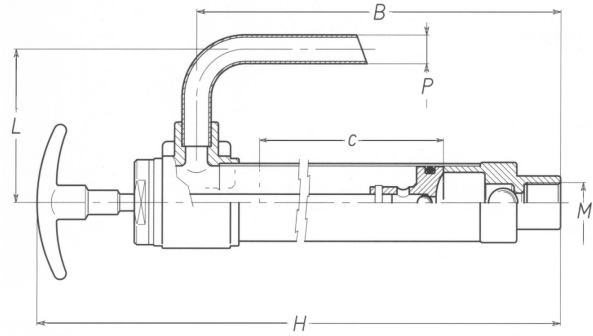


POMPA RICAMBIO OLIO - TIPO NORMALE - OTTONE
SUMP-OIL CHANGE PUMP - NORMAL TYPE - BRASS
 Cod 1033 = 1/2" Gas



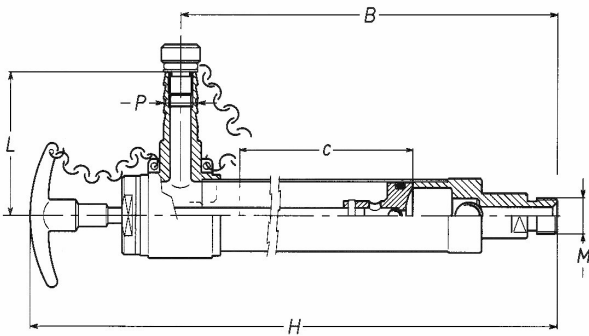
PESO (gr)	450	785	P	13	15
C	125	190	B	194	273
H	255	335	L	38	66
A	165	230	Ref.	1/2"	3/4" 1"

POMPA RICAMBIO OLIO - TIPO "EXPORT" - OTTONE
SUMP-OIL CHANGE PUMP - EXPORT SET - BRASS
 Cod 1034 = 16 x 1.5 Gas



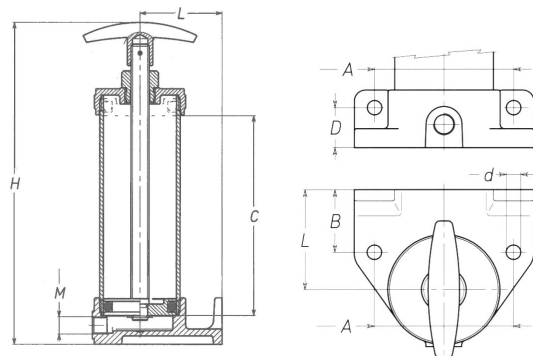
PESO (gr)	700	B	205
C	140	L	70
P	12	M	16x1.5
H	270		

POMPA RICAMBIO OLIO - TIPO "EXTRA" - OTTONE -
Cod 1035
SUMP-OIL CHANGE PUMP - EXTRA SET - BRASS



PESO (gr)	810	P	16
C	190	B	275
H	340	L	64
M	16x1.5	Ref	1"

INGRASSATORE - OTTONE Cod 1036
GREASER - BRASS



PESO (gr)	870	L	45
d	6.5	M	G 1/8"
A	62	H	178-288
B	28	C	110
D	17		



Cod. 1080 – bronzo
Tipo SL2-B/AM



Cod. 1081 – ghisa
Tipo SL2-G

Pompa a mano a pistoni orizzontale, auto-adescente, a doppio effetto, a movimento alternato, in bronzo o ghisa

Piston horizontal hand pump, self priming, double acting, reciprocating action, bronze or cast-iron

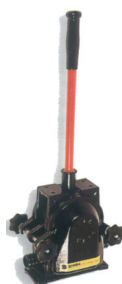
Codice	Articol	Vers.	Ø	L/m	Kg	Materiale
1080	SL2	B-AM	1"	40	9,2	Bronzo
	SL3	B-AM	1" 1/4	55	14,6	Bronzo
	SL4	B-AM	1" 1/2"	80	21,5	Bronzo
	SL5	B-AM	2"	110	30,5	Bronzo
1081	SL2	G	1"	40	8,7	Ghisa
	SL3	G	1" 1/4	55	12,2	Ghisa
	SL4	G	1" 1/2"	80	18,5	Ghisa
	SL5	G	2"	110	28,1	Ghisa



Pompa a membrana singola, corpo in plastica, ideali per nautica da diporto

Single diaphragm hand pump with plastic body, ideal for marine use

Cod. 1096 T/A-P-AL - Diam. 32
- 45 l/m - 2,6 kg



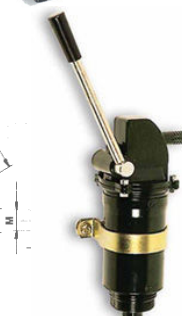
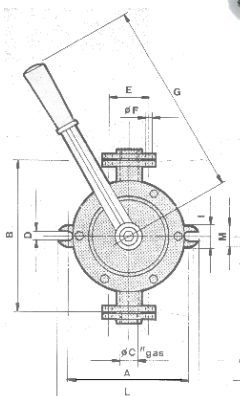
Pompa a membrana singola o doppia con corpo metallico, in acciaio inox o lega leggera con rivestimento poliestere.

Diaphragm hand pump available in single or double membrane, stainless steel or cast-alloy body polyester coated

Cod. 1097 - DD70 - AL - Diam. 25 mm - 70 l/m - 3,5 kg

Pompe semi rotative in bronzo o ghisa

Semi-rotary wing pumps in bronze or cast iron



Pompa a pistone, auto-adescente a semplice effetto, a movimento alternato, con staffa di fissaggio; ideale per motori marini e industriali

Piston hand pump, self-priming, single action, for industrial and marine motors

Cod. 1082 - AL - Diam. 1/2" - 40 l/m - 1,6 kg – BETA – 2-2

Codice	Tipo	Ø	Port	A	B	C	D	E	F	G	H	I	L	M	N	P	Q	Kg	Materiale
1083	E0	1/2"	12	125	175	1/2"	9	43	7	260	136	26	148	25	11	16	28	3,1	bronzo
1084	E1	3/4"	18	150	205	3/4"	11	55	7	260	136	32	176	25	15	16	29	4,3	bronzo
1085	E2	1"	24	170	230	1"	12	64	9	260	138	32	198	25	15	16	32	5,5	bronzo
1086	E0	1/2"	12	125	175	1/2"	9	43	7	260	136	26	148	25	11	16	28	3,0	ghisa
1087	E1	3/4"	18	150	205	3/4"	11	55	7	260	136	32	176	25	15	16	29	4,0	ghisa
1088	E2	1"	24	170	230	1"	12	64	9	260	138	32	198	25	15	16	32	5,0	ghisa



Pompetta di aspirazione carburante, completa di valvola e portagomma, Ø mm 45, lunghezza mm 108, per tubi Ø mm 8

COD. 1098



Tubazione per carburante nero, fabbricato con speciale tubo co-estruso con interposta calza in poliestere. Sezione 8x16, resistentente fino 1 15 bar, compresa di polpetta tipo maggiorata, adatta per benzina verde, senza attacchi terminali lunghezza mt 2.

COD. 1099